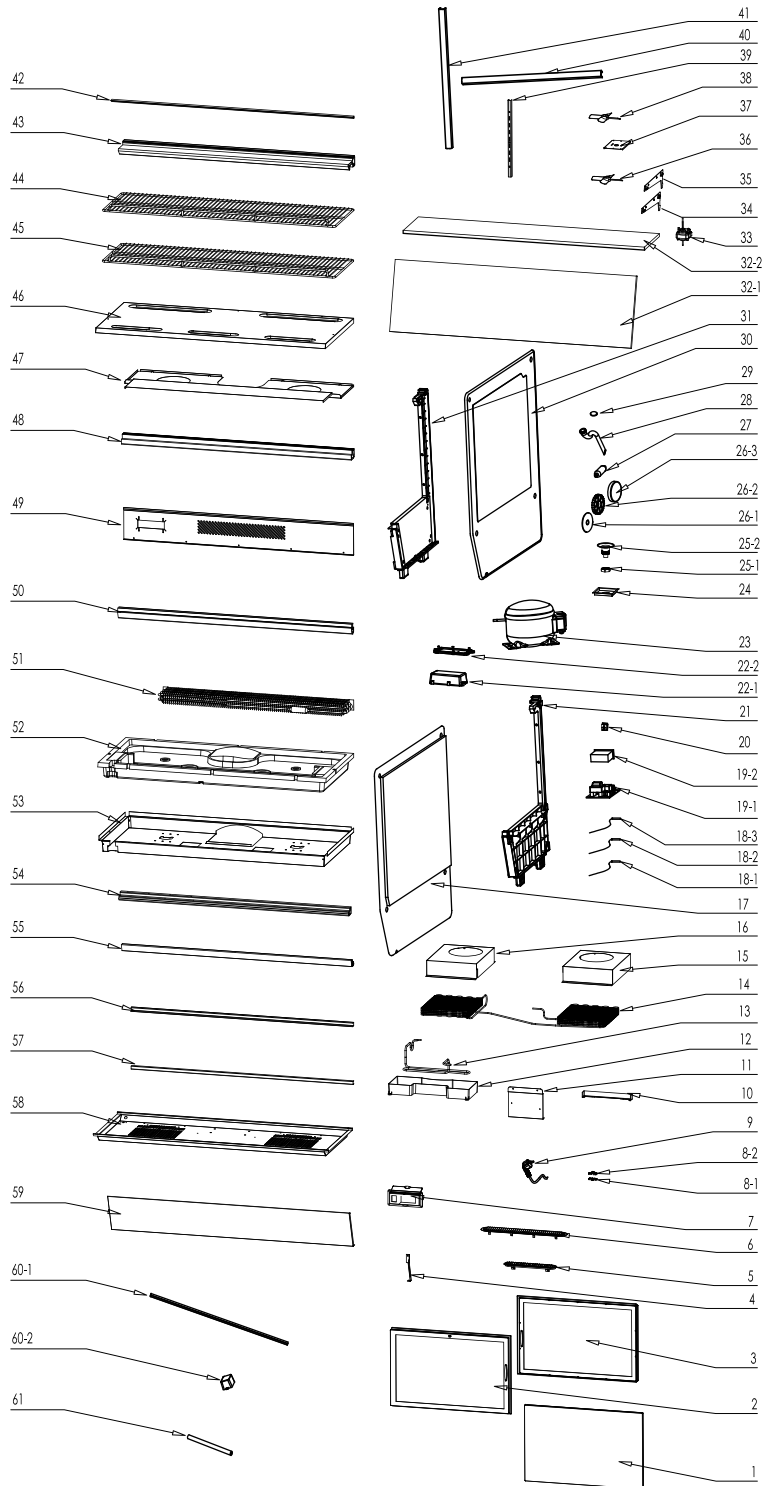


Parts Breakdown

Model RS-CN-0202-5 47279



Parts Breakdown

Model RS-CN-0202-5 47279

| Item No. | Description | Position | Item No. | Description | Position | Item No. | Description | Position |
|----------|-------------------------------------|----------|----------|--------------------------------------|----------|----------|--------------------------------------|----------|
| AA068 | Door Glass for 47279 | 1 | 60119 | Switch for 47279 | 20 | 30751 | Pillar for Bracket for 47279 | 39 |
| AA069 | Inner Door Frame for 47279 | 2 | AH717 | Left Panel for 47279 | 21 | AH725 | Left Seal for 47279 | 40 |
| AA070 | Outer Door Frame for 47279 | 3 | AA050 | Control Box for 47279 | 22-1 | AH726 | Right Seal for 47279 | 41 |
| AH739 | Front Middle Support for 47279 | 4 | AA051 | Control Box Cover for 47279 | 22-2 | AA089 | Decorative Board for 47279 | 42 |
| 30776 | Cover for Air Outlet for 47279 | 5 | 60534 | Compressor for 47279 | 23 | AA090 | Top Panel for 47279 | 43 |
| AA072 | Cover for Air Suction for 47279 | 6 | AA083 | Backing Plate for 47279 | 24 | AA091 | Shelf 1 for 47279 | 44 |
| 68298 | Switch Base for 47279 | 7 | 71518 | Nut for 47279 | 25-1 | AA092 | Shelf 2 for 47279 | 45 |
| 61246 | Wire Clip Holder for 47279 | 8-1 | AA084 | Drainage Pipe Joint for 47279 | 25-2 | AA093 | Vent Tray for 47279 | 46 |
| 61245 | Wire Clip Cover for 47279 | 8-2 | 79314 | Decoration Nut Gasket for 47279 | 26-1 | AA094 | Evaporator Protect Board for 47279 | 47 |
| AA062 | Power Cord for 47279 | 9 | 79313 | Nut Gasket for 47279 | 26-2 | AA095 | Rear Middle Pillar for 47279 | 48, 50 |
| AA073 | Condenser Limiting Plate for 47279 | 10 | 79312 | Nut Decoration for 47279 | 26-3 | AA096 | Rear Base Panel for 47279 | 49 |
| AA074 | Fixed Board of PCB Box for 47279 | 11 | 30624 | Dry Filter for 47279 | 27 | AA098 | Evaporator for 47279 | 51 |
| 60948 | Water Receiver for 47279 | 12 | 30744 | Water Pipe for 47279 | 28 | AA099 | Foam Base of Evaporator for 47279 | 52 |
| AA075 | Tray of Heater for 47279 | 13 | 68368 | Snap Ring for 47279 | 29 | AA100 | Plastic Base for Pillar for 47279 | 53 |
| AA076 | Condensator for 47279 | 14 | AH720 | Right Panel for 47279 | 31 | AA101 | Rear Bottom Pillar for 47279 | 54 |
| AA077 | Right Condensator Cushion for 47279 | 15 | AH732 | Front Glass for 47279 | 32-1 | AA102 | Front Bottom Pillar for 47279 | 55 |
| AA078 | Left Condensator Cushion for 47279 | 16 | AH733 | Upper Glass for 47279 | 32-2 | AA103 | Rear Bottom Pillar Lining for 47279 | 56 |
| AH716 | Left Glass for 47279 | 17, 30 | AA086 | Motor Fan for 47279 | 33 | AA104 | Front Bottom Pillar Lining for 47279 | 57 |
| 68332 | Temperature Sensor for 47279 | 18-1 | 67313 | Bottom Shelf Bracket Left for 47279 | 34 | AA105 | Bottom Base of Compressor for 47279 | 58 |
| AA049 | Defrost Probe for 47279 | 18-2 | 67314 | Bottom Shelf Bracket Right for 47279 | 35 | AA106 | Front Frame for 47279 | 59 |
| AH718 | High Temperature Sensor for 47279 | 18-3 | AA087 | Fan Blade for 47279 | 36 | AA107 | LED Light for 47279 | 60-1 |
| AA052 | Main Circuit Board for 47279 | 19-1 | 79662 | Metal Base of Fan Motor for 47279 | 37 | 68356 | Driver for 47279 | 60-2 |
| AA082 | Digital Controller for 47279 | 19-2 | AH740 | Fan Blade for 47279 | 38 | 30742 | Accumulator for 47279 | 61 |